



Superior Distribution Ctr.

1142 South First St.

Turlock, CA, 95381

Phone: (209) 667-7572

(800) 457-1728

FAX: (209) 667-8208

NEW PRODUCTS
NEW REPLACEMENT ALTERNATORS, STARTERS, AND COMPONENTS



IYA6016
CDI MODULE,
FOR YAMAHA,
CAPACITIVE DISCHARGE IGNITION,
w/ELECTRONIC ADVANCE;
USED ON:
Yamaha Crypton



IYA6026
CDI MODULE,
FOR YAMAHA,
CAPACITIVE DISCHARGE IGNITION,
USED ON:
Yamaha Rhino 2004-07
REPL.: YAMAHA
SUG-85540-10-00



LFS0008
FOR FENNER FLUID POWER,
PRIME MOVER,
12-VOLT; CW; 9 SPLINE;
LESTER 10739; PIC 160-868;
Insulated Ground;
Double Ball Bearing;
2 Top Posts;
See LFS0007 (Top & Bottom Posts);
REPL: FENNER-STONE
1472-AC, 1788-AC;
REFERENCE NUMBERS
301821-000,
303797-000,
W-9795



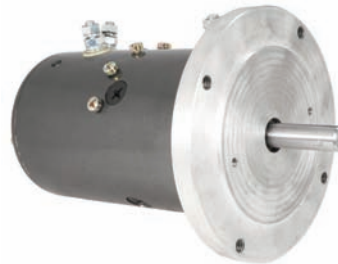
LMN0010
FOR HYSTER, JS BARNES,
MTE HYDRAULICS, MONARCH,
RAYMOND CORPORATION,
12-VOLT; CCW;
LESTER 10760; PIC 160-989;
2-Post;
Double Ball Bearing;
Insulated Ground;
Thru Bolts at 12:00 and 6:00
See LMN0009 (3:00 and 9:00)
REPL: REFERENCE NUMBERS
W-9007



LPL0008
FOR HALE FIRE PUMP,
WISCONSIN ENGINEERING,
POWER WHEELS EQUIP.,
PUREX CORP, WATEROUS,
12-VOLT; CW;
LESTER 10718; PIC 160-815
Fire Truck Primer Pump Motor;
Heavy Duty;
Double Ball Bearing;
REPL: PRESTOLITE
MCL6225, -A, -28,
MCL6508, -T,
46-235, 46-2155,
46-2244, 46-2604;
REFERENCE NUMBERS
200-0040-00, M-2000,
V-1157, V-2068,
VHA-445D,
W-6598



LPL0019
FOR RAYMOND CORP.,
HYSTER, J.S. BARNES,
MONARCH HYDRAULICS, MTE
HYDRAULICS,
12-VOLT; CCW;
LESTER 6035, 6037;
PIC 160-707, -708, -808, -A, -B;
Heavy Duty;
Insulated Ground;
Four Field Coil;
Slot Shaft;
Thru bolts at the 6:00 and 12:00;
REPL: PRESTOLITE
MDY6103, -09,
MDY6120, -20S,
MDY6121, -21S,
MDY6203, -3S, -05,
MDY7065,
MUE6121
46-175, 46-584,
46-2112, 46-2126,
46-2194, 46-2559,
JS BARNES
220-0028, 220-0030,
220-0176, 220-0230,
220-0355, 220-0525
REFERENCE NUMBERS
W-8935



LPL0047
FOR APPLIED MOTORS,
PACIFIC SCIENTIFIC,
ANCHOR LIFTS,
12-VOLT; BI-DIRECTIONAL;
PIC 160-996;
2-Post;
Double Ball Bearing;
Insulated Ground;
5/8" Diameter shaft with bar key slot
REPL.: REFERENCE NUMBERS
12641560, M-2400,
W-8930B



LRW0004
FOR SUPER WINCH,
WARN INDUSTRIES,
12-VOLT; BI-DIRECTIONAL;
LESTER 10747; PIC 160-799;
3 Post; 20-Spline shaft;
REPL.: REFERENCE NUMBERS
25314, -981, -982,
16548, 160799,
MRV-B-7,
W-7920, -3



SBO0147
PMGR; 12-VOLT; CW; 9-TOOTH
LESTER 17792; PIC 120-387;
Used on:
1999-02 Landrover Discovery w/4.0L
2003-04 Landrover Discovery w/4.6L
1999-01 Range Rover w/4.0L
1999-02 Range Rover w/4.6L
REPL.: BOSCH
0-001-109-040;
LANDROVER
NAD101190,
NAD101490



SBS0028
FOR BRIGGS & STRATTON,
12-VOLT; 15-TOOTH;
CCW ROTATION;
LESTER 5776; PIC 106-210;
Used on John Deere, others, with 12.5-18HP engines, using a steel flywheel
REPL.: B&S 691564, 693469,
808106;
JOHN DEERE
M143512



Superior Distribution Ctr.

1142 South First St.

Turlock, CA, 95381

Phone: (209) 667-7572

(800) 457-1728

FAX: (209) 667-8208

NEW PRODUCTS

NEW REPLACEMENT ALTERNATORS, STARTERS, AND COMPONENTS

The information herein is based upon data which we believe to be correct and believe to have been obtained from reliable sources, but no representation is made herein, nor should any be implied, regarding the accuracy of any such information and we assume no liability for any errors or omissions in any such information. Any original equipment manufacturers or other manufacturers or distributors, whose names, numbers, pictures, symbols, products and/or descriptions are, or may be, listed or shown herein are used for reference purposes only and there is no representation made or intended, nor should any be implied, that any item reference herein is the product of, or was manufactured and/or distributed, by, the referenced manufacturer or distributor, as the case may be.

4/08-III

This brochure is intended for reference purposes only. For pricing or terms and conditions, please refer to your price sheet.



SCH0007
FOR ATV'S & SCOOTERS
BUILT IN CHINA,
12-VOLT; CCW: 12-SPLINE

LESTER 19576;
PIC 199-076;
Used on 50cc Engines



SCH0010
FOR ATV'S & SCOOTERS
BUILT IN CHINA,
12-VOLT; CCW: 10-SPLINE

LESTER 19579;
PIC 199-079;
Used on 80cc Engines



SCH0014
FOR ATV'S & SCOOTERS
BUILT IN CHINA,
12-VOLT; CW: 9-SPLINE

LESTER 19583;
PIC 199-083;
Used on 150cc Engines



SCH0026
FOR ATV'S & SCOOTERS
BUILT IN CHINA,
12-VOLT; CCW; 14-TOOTH;

LESTER 19594;
PIC 199-064;



SMT0270
PMGR; 12-VOLT; CW; 8-TOOTH

LESTER 17837;
PIC 103-5014;
Used on:
2000-03 Chevrolet Tracker w/2.0L
2004 Chevrolet Tracker w/2.5L
2000-03 Suzuki Vitara w/2.0L

REPL.: MITSUBISHI
M1T86081;
GENERAL MOTORS
30024598;
SUZUKI
31100-65DB0



SND0158
OSGR; 12-VOLT; CW; 9-TOOTH

LESTER 17171;
PIC 190-224;
Used on:
1990-93 Toyota Celica w/1.6L
1988-92 Toyota Corolla w/1.6L

REPL.: DENSO
128000-4420, -5780;
TOYOTA
28100-16020,
27060-16110,
27060-16120



SND0461
OSGR; 12-VOLT; CW; 9-TOOTH

LESTER 18410;
PIC 190-435C;
Used on Toyota Lift Trucks

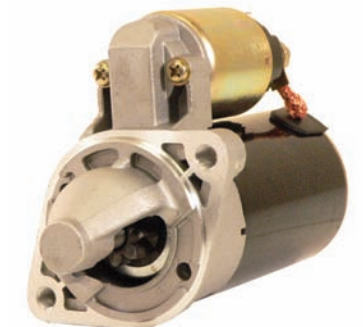
REPL.: DENSO
228000-4390, -1;
TOYOTA
28100-20553-71



SPR0012
PMDD; 12-VOLT; CW; 8-TOOTH

LESTER 17827;
PIC 108-281, -A;
Used on:
2001-02 Hyundai Accent w/1.5L
2001-07 Hyundai Accent w/1.6L
2006 Kia Rio w/1.6L

REPL.: VALEO
TM000A27301,
TM000A37210;
HYUNDAI
36100-22800, -5



SPR0013
PMDD; 12-VOLT; CW; 8-TOOTH

LESTER 17826;
PIC 108-267, -A;
Used on:
2001-02 Hyundai Accent w/1.5L
2001-07 Hyundai Accent w/1.6L
2006 Kia Rio w/1.6L

REPL.: VALEO
TM000A27601,
TM000A37301;
HYUNDAI
36100-22850, -5